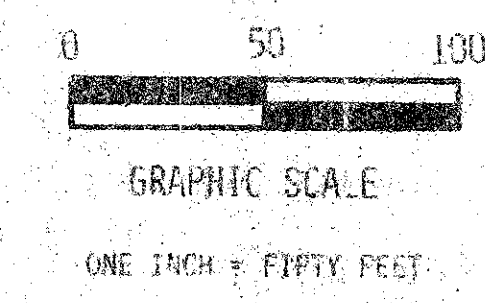
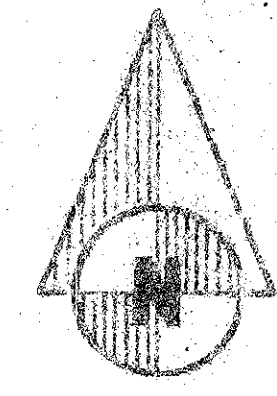


# Springhill Plat No. 1

Lying in the Northeast 1/4 of Section 34,  
Township 44 South, Range 42 East, Palm  
Beach County, Florida - January, 1977.

171

STATE OF FLORIDA  
COUNTY OF PALM BEACH  
This Plat was filed for  
record at  
this day of  
AD, 1977 and duly re-  
corded in Plat Book  
on Pages and  
JOHN B. DUNKLE, Clerk  
Circuit Court  
By: \_\_\_\_\_



NOT PLATTED  
ALREAGE

NOT PLATTED  
ALREAGE

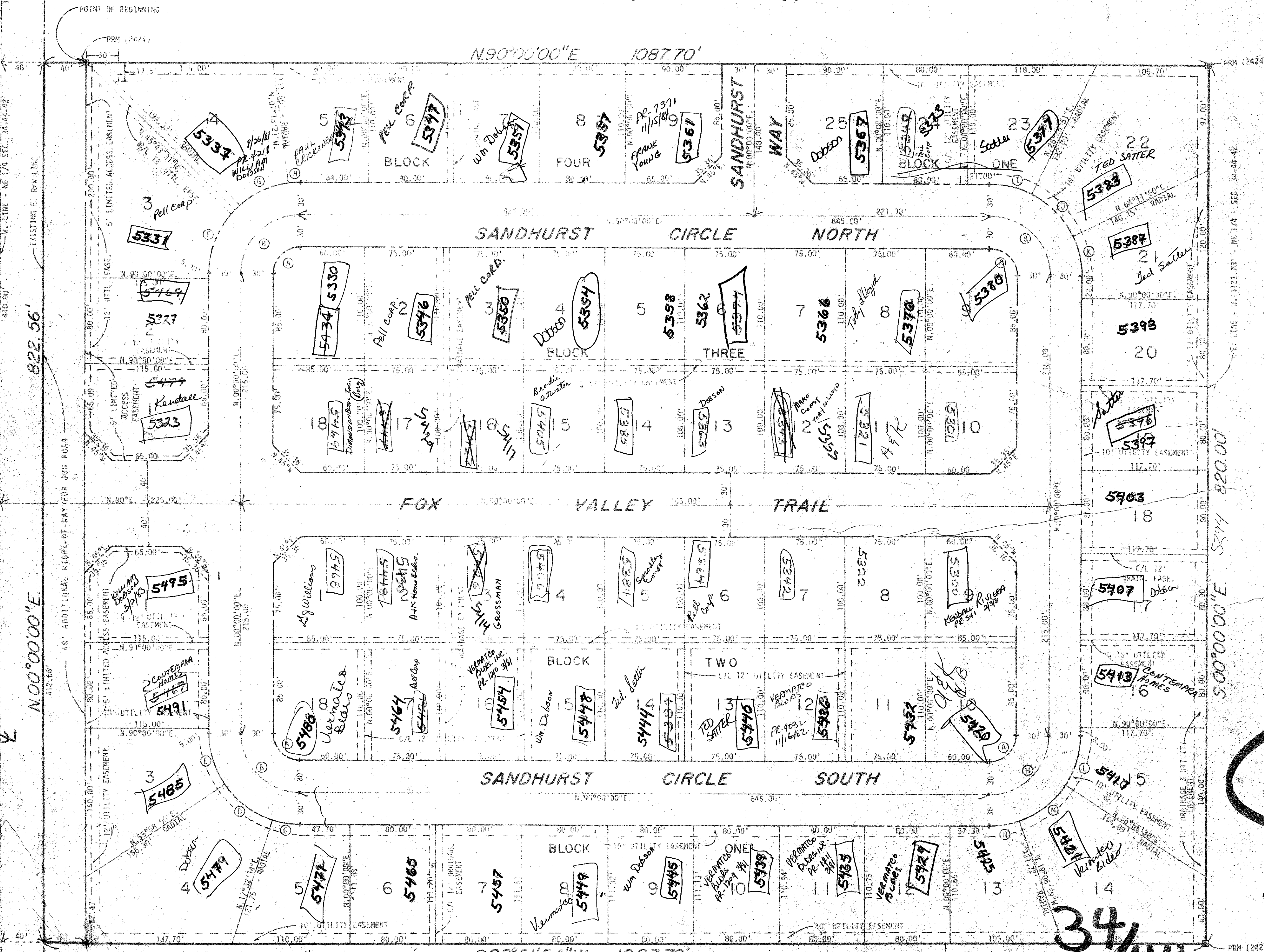
CURVE	CENT. ANG.	ARC LENS	ARC	CHORD	TANGENT
A	93°00'00"	25.00'	39.27'	35.26'	25.00'
B	89°00'00"	55.00'	86.39'	77.78'	55.00'
C	17°32'14"	25.00'	25.02'	25.92'	13.11'
D	33°26'36"	85.00'	57.63'	55.97'	29.64'
E	34°01'12"	85.00'	50.47'	49.73'	26.00'
F	44°16'28"	95.00'	65.66'	64.26'	34.58'
G	38°25'10"	75.00'	57.00'	55.94'	24.62'
H	07°18'21"	25.00'	13.64'	10.83'	5.45'
I	26°26'51"	85.00'	39.24'	38.83'	18.97'
J	37°44'59"	85.00'	56.00'	55.05'	28.05'
K	25°48'10"	85.00'	46.28'	37.96'	19.47'
L	33°04'22"	85.00'	49.07'	48.39'	25.24'
M	37°48'33"	85.00'	56.09'	55.04'	29.11'
N	13°06'58"	85.00'	28.36'	28.23'	14.31'

**33**

Flood Zone NO  
Zone RS  
Fairshare 01

1000-136

34/44/42



LAKE WORTH DRAINAGE DISTRICT LATERAL CANAL L-15  
TURNOUT REQUIRED

BENCH MARK  
land surveying and mapping, Inc.  
WANTMAN & ASSOCIATES, INC.  
CONSULTING ENGINEERS  
WEST PALM BEACH, FLORIDA

SPRINGHILL PLAT NO.

171

NO.	DATE	DESCRIPTION	BY	FIELDBOOK NO.	PL.	PAGE	SHEET

PALM BEACH GOLF CLUB ESTATES, PLAT 5  
PLAT BOOK 30, PAGES 195-196

NOT PLATTED  
ALREAGE